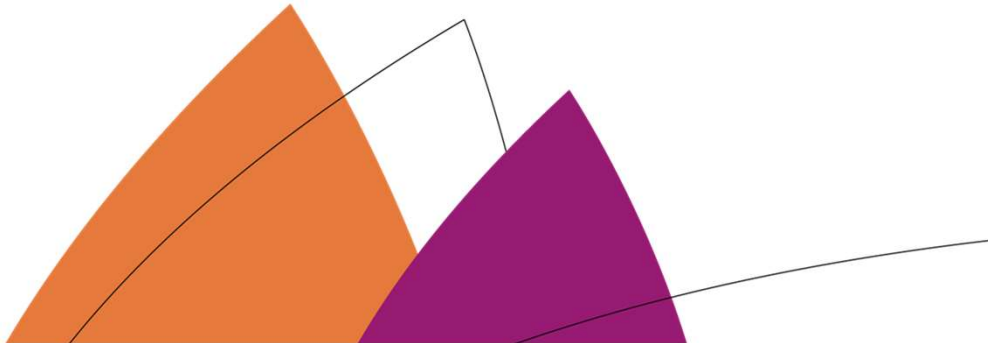




CAAC Design and Construction Update

6-15-2023



2022 Projects

Additions

Ralston Valley HS 10 Additional Classrooms EUA - Himmelman



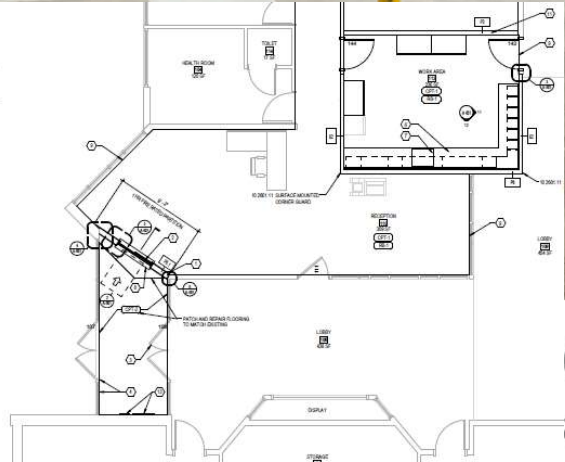
Ralston Valley HS 10 Additional Classrooms EUA - Himmelman



2023 Efficiency Future Ready & DW projects

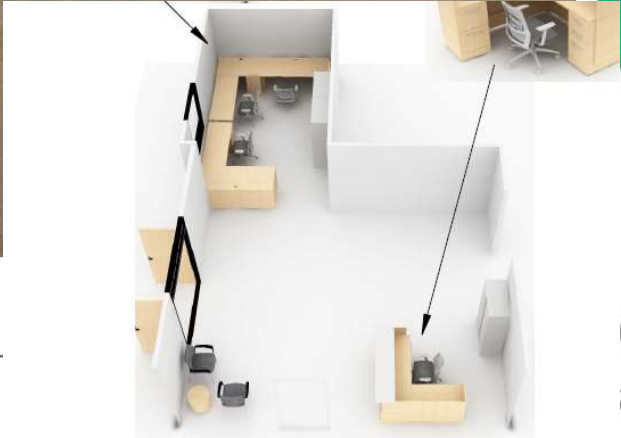
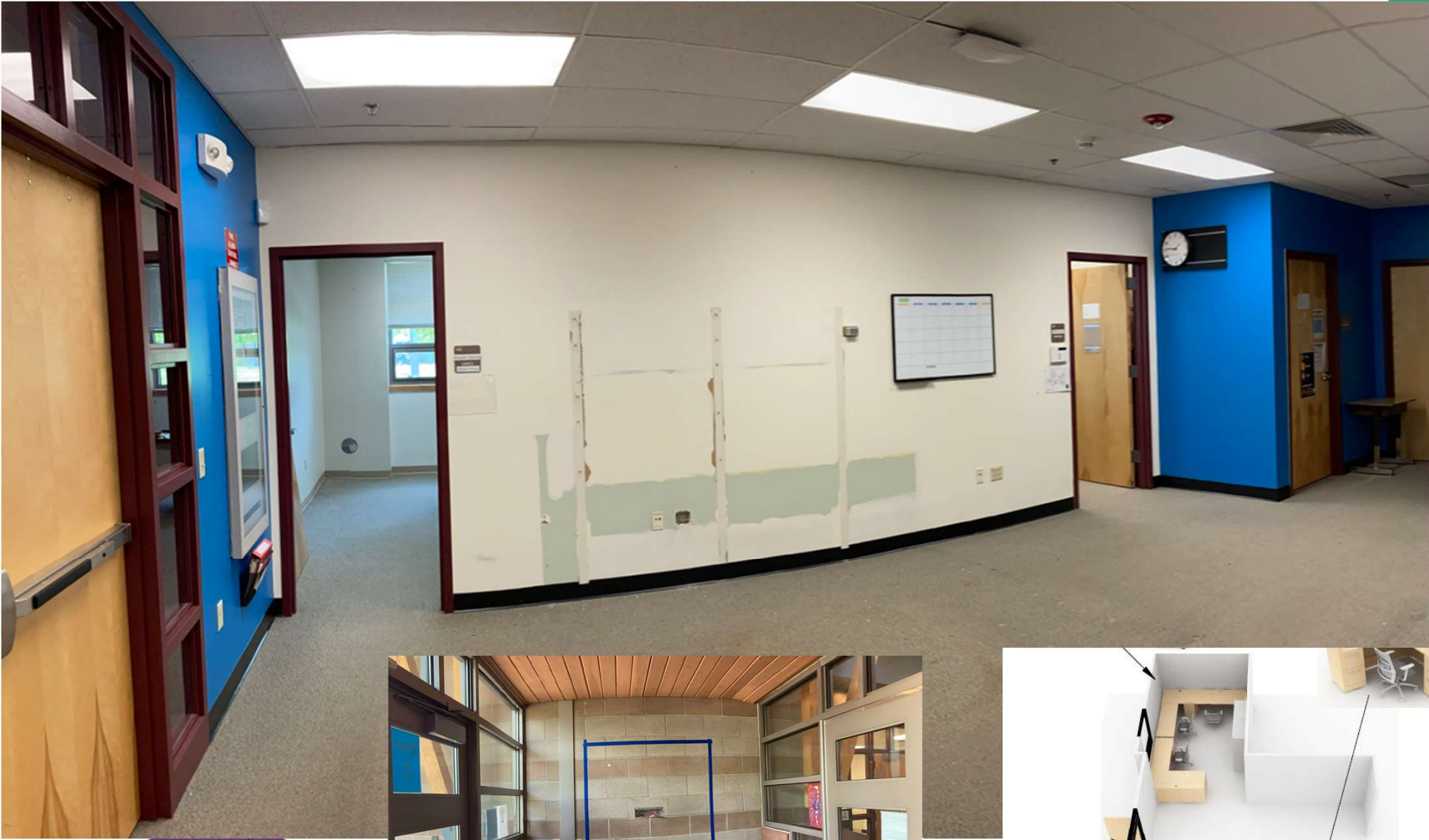
Ute Meadows ES – Efficiency Future Ready MOA – Crossland

Construction
\$606,581



Blue Heron ES – Efficiency Future Ready MOA – Crossland

Construction
\$628,145



Mortensen ES – Efficiency Future Ready DLH – Crossland

Construction
\$840,810



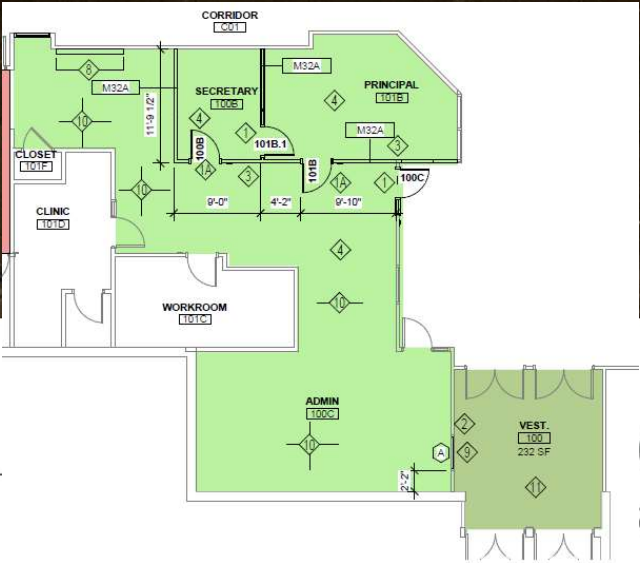
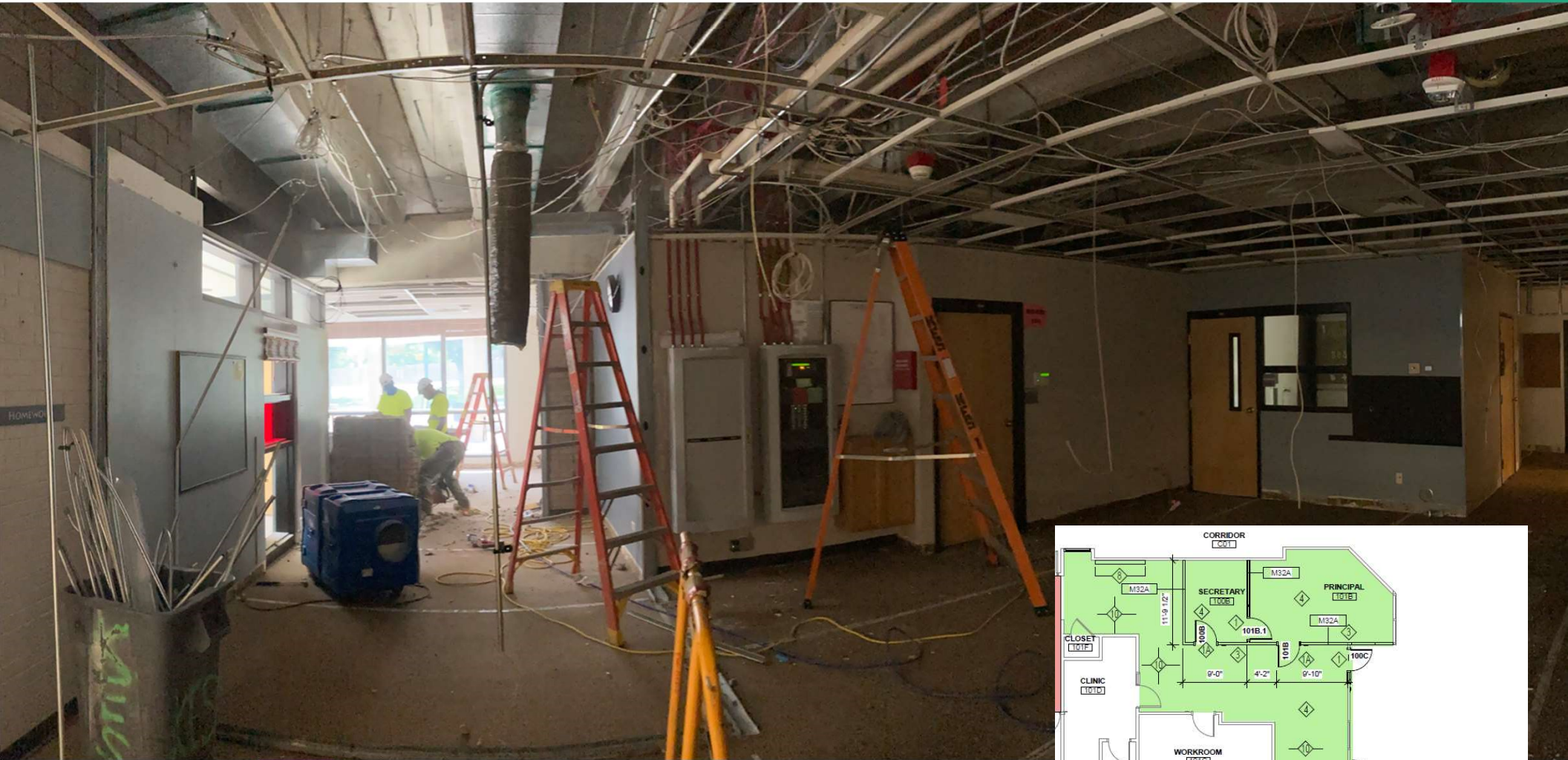
Shaffer ES – Efficiency Future Ready DLH – Crossland

Construction
\$790,942



Ken Caryl MS – Efficiency Future Ready HCM – PG Arnold

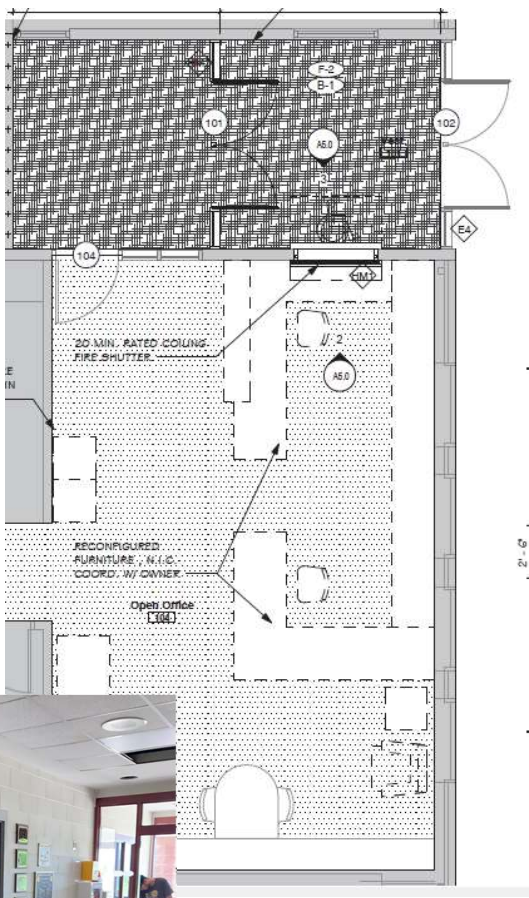
Construction
\$1,606,000



DANGER
ASBESTOS
REMOVAL IN
PROGRESS

Mt Carbon – Efficiency Future Ready Eidos – Single Track

Construction \$521,213



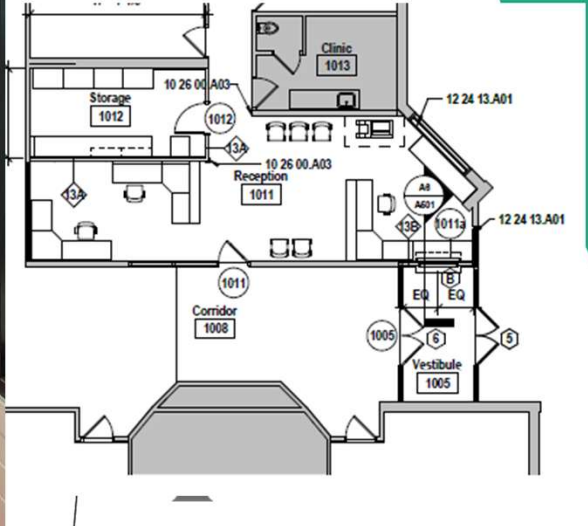
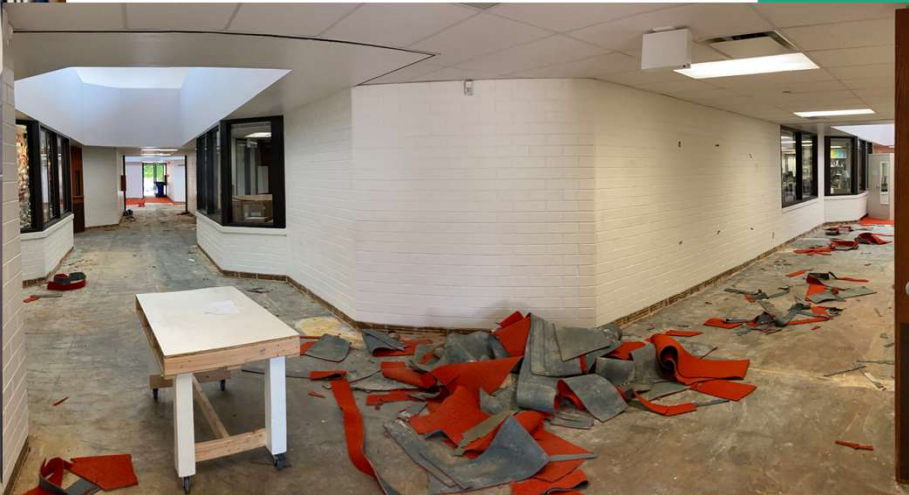
Summit Ridge MS – Efficiency Future Ready H&M – GTC

Construction
\$1,179,200



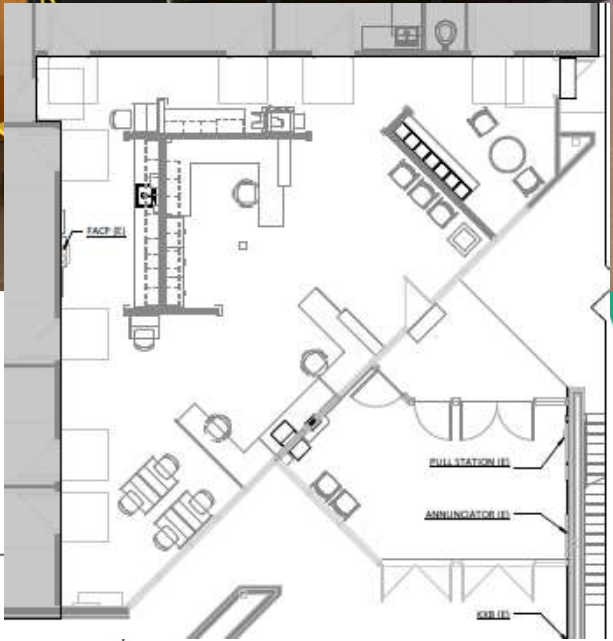
Kendallvue ES – Efficiency Future Ready H&M – GTC

Construction
\$1,194,500



Deer Creek MS Efficiency Future Ready RB+B – GTC

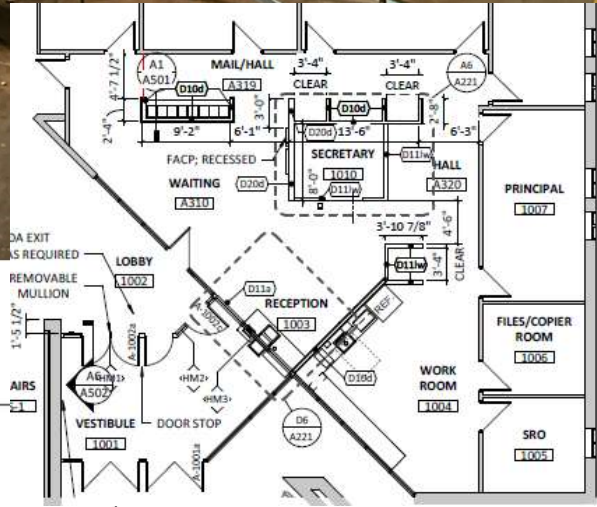
Construction
\$521,700



DANGER
ASBESTOS
REMOVAL IN
PROGRESS

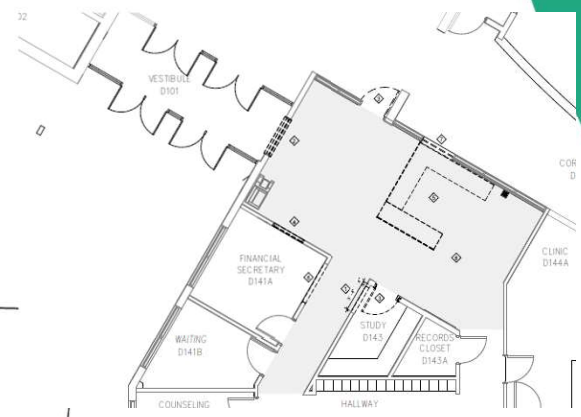
Mandalay MS Efficiency Future Ready RB+B – GTC

Construction
\$595,700



Dunstan MS – Efficiency Future Ready HCM – Single Track

Construction
\$896,946



Sobesky Academy – Efficiency Future Ready Eidos – Singletrack

Construction
\$556,500



Pennington ES – Efficiency Future Ready Eidos – Single Track

Construction
\$774,500



Bear Creek K8 – Efficiency Future Ready MOA – Flintco

Construction
\$532,112



Falcon Bluffs MS – Efficiency Future Ready MOA – Flintco

Construction
\$937,343



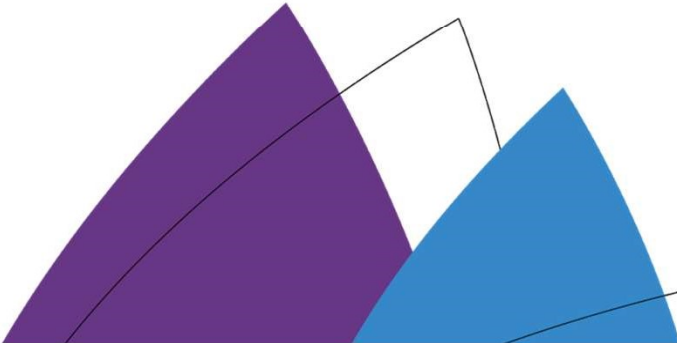
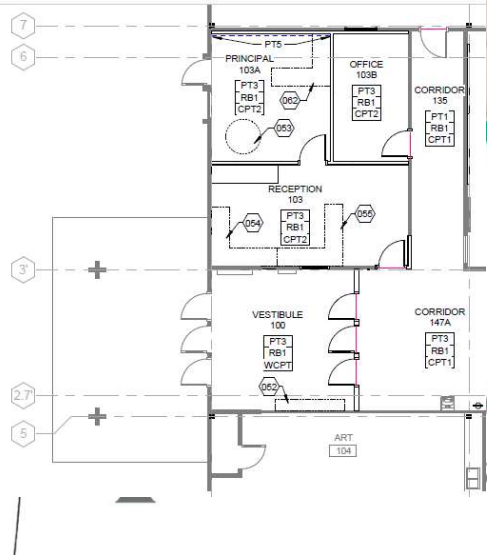
Governors Ranch – Efficiency Future Ready MOA – Flintco

Construction
\$586,031



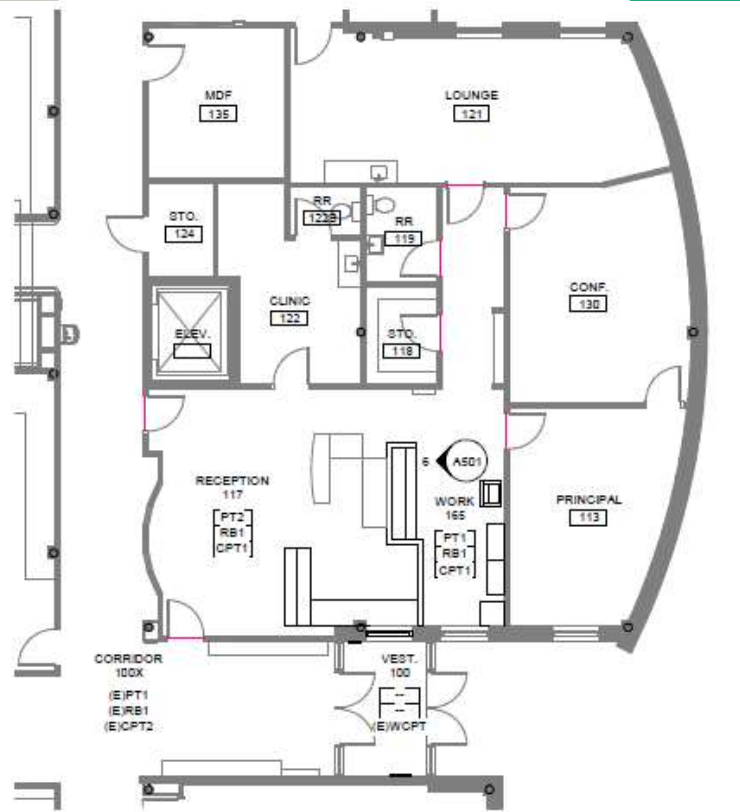
Little ES – Efficiency Future Ready Treanor HL – ADMiller

Construction
\$715,974



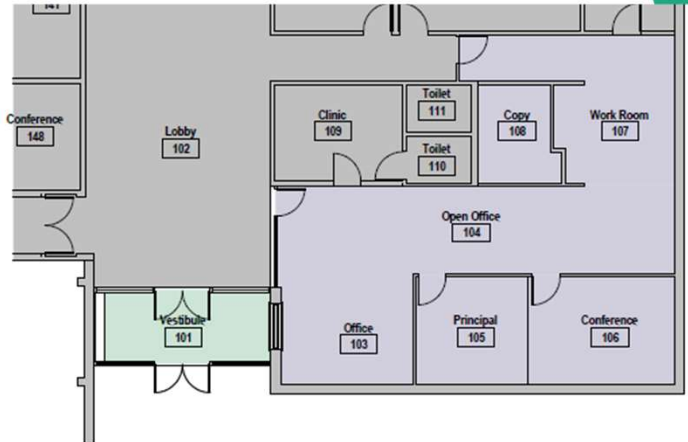
S Lakewood ES – Efficiency Future Ready Trenor HL – ADMiller

Construction
\$464,010



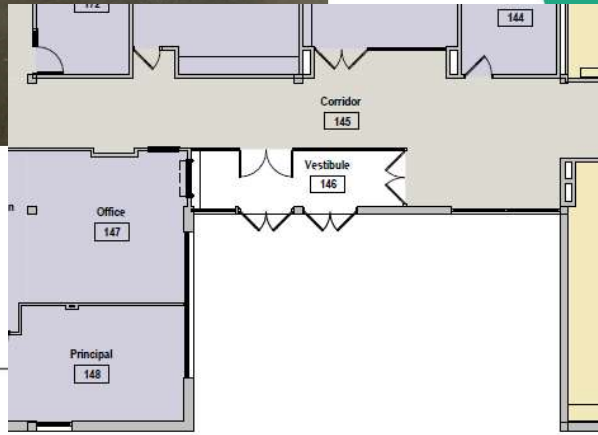
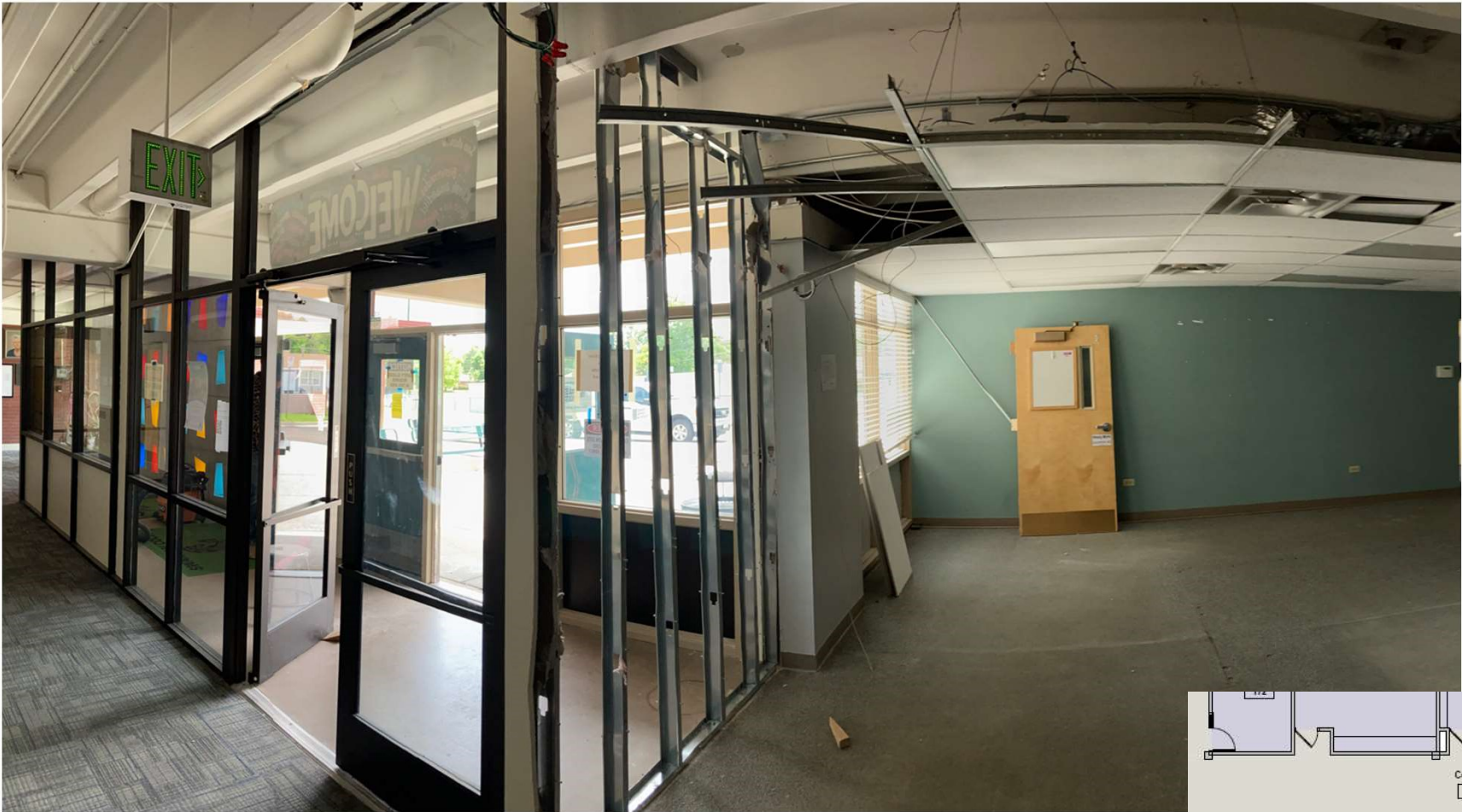
Van Arsdale ES – Efficiency Future Ready H+M – O-A-K

Construction
\$1,028,750



Swanson ES – Efficiency Future Ready H+M – O-A-K

Construction
\$2,193,000



Oberon MS – Efficiency Future Ready Larson Incitti – Himmelman

Construction
\$3,054,820



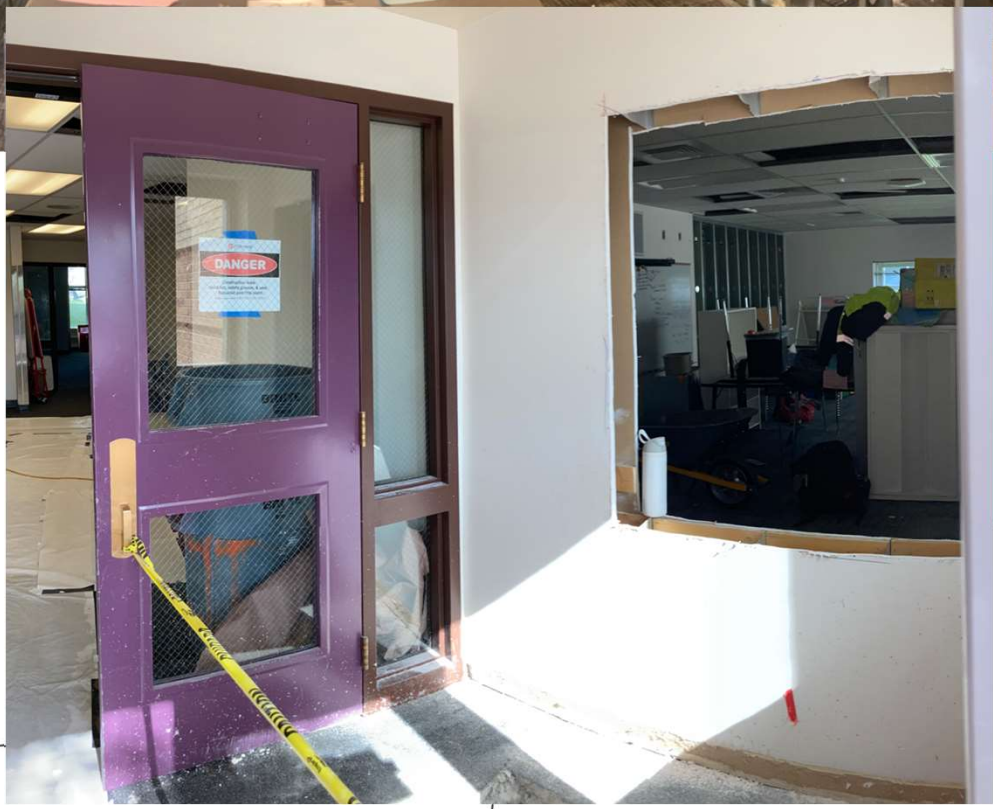
START May 30

DANGER
ASBESTOS
REMOVAL IN
PROGRESS



Edgewater ES – Efficiency Future Ready HCM – PG Arnold

Construction
\$535,000



Connections – Efficiency Future Ready Studios – Brannon / Pacific Air

Construction
\$104,342



Efficiency Future Ready
Wheat Ridge HS
Eidos – GTC

Construction
\$11,223,514



Efficiency Future Ready Wheat Ridge HS Eidos – GTC

Construction
\$11,223,514



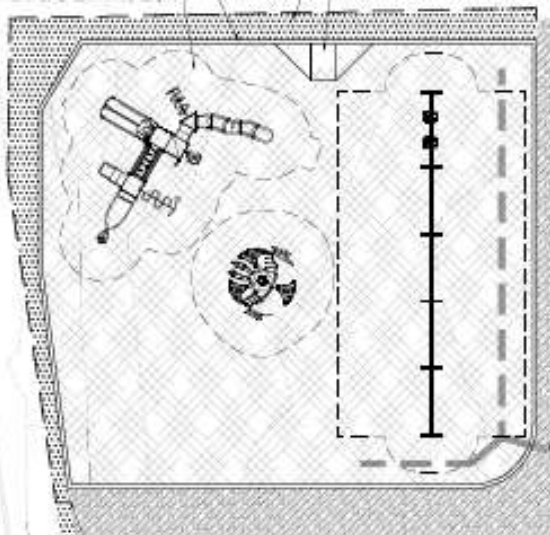
Efficiency Future Ready Wheat Ridge HS Eidos – GTC

Construction
\$11,223,514



DW Playground 2023
Edgewater ES
Hutchinson ES - Complete
Design Concepts - Richdell

Construction
\$460,001



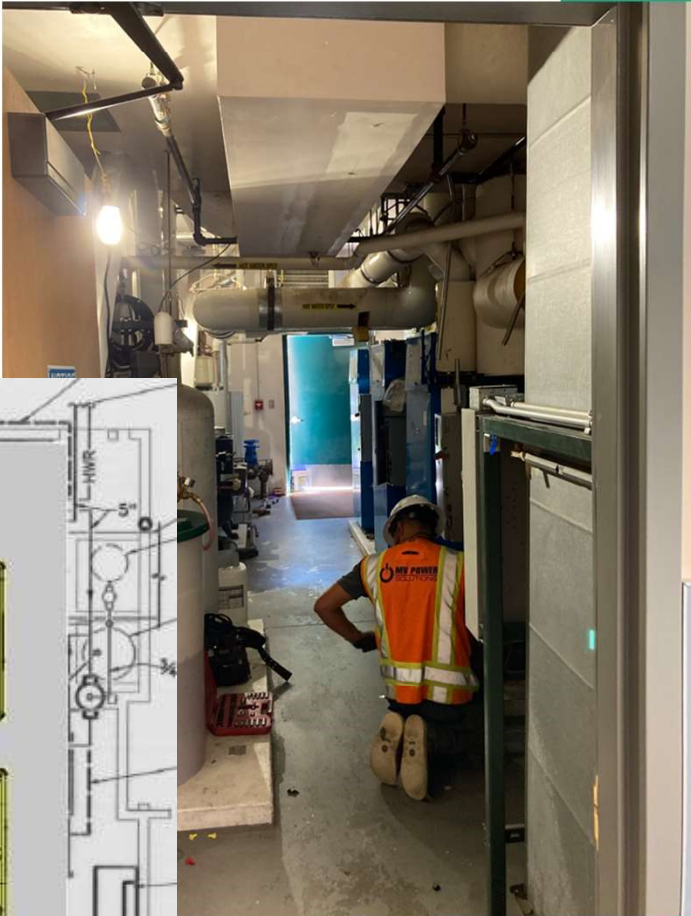
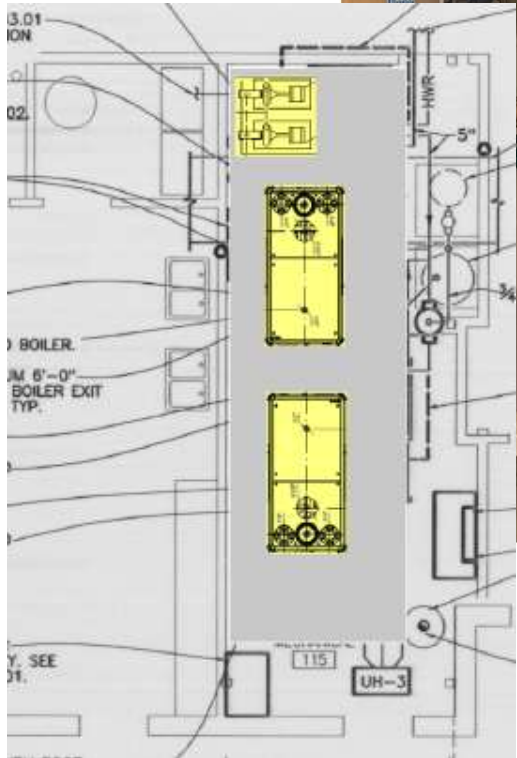
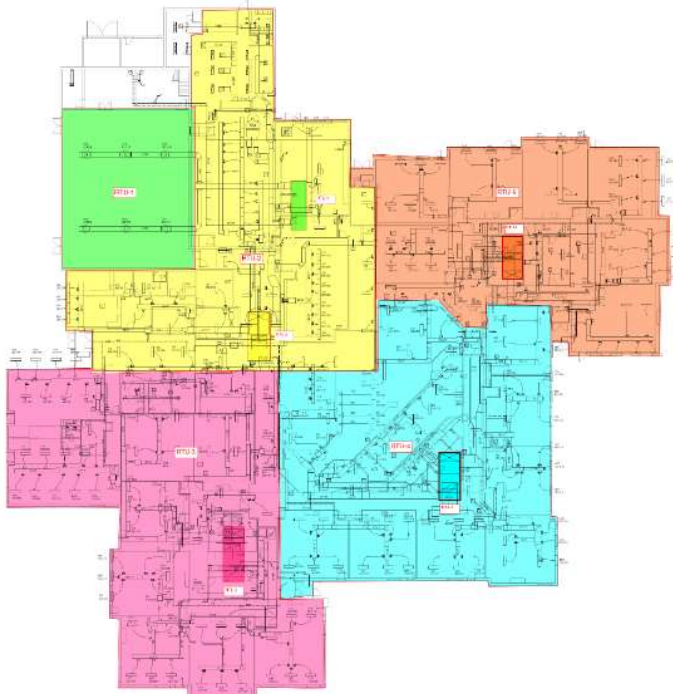
DW Mechanical 2023

Bradford South (RTU's, Controls),
Sobesky (Boilers, Pumps, Controls)

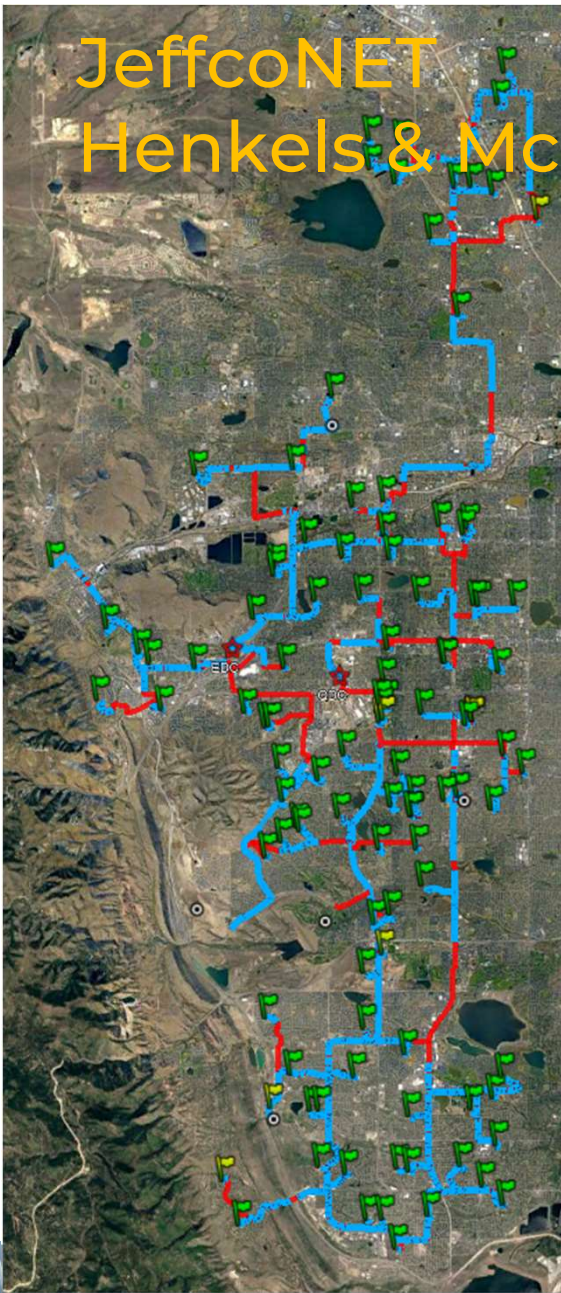
*West Woods ES scope & funding moved back to E&FFR summer 2024

Construction
\$2,445,091

Columbine – CMGC Himmelman



JeffcoNET Henkels & McCoy



Project Information

Project Start
April 29, 2020

Total Miles of conduit
to be bored 114

1,109 Permits to date
3 remaining

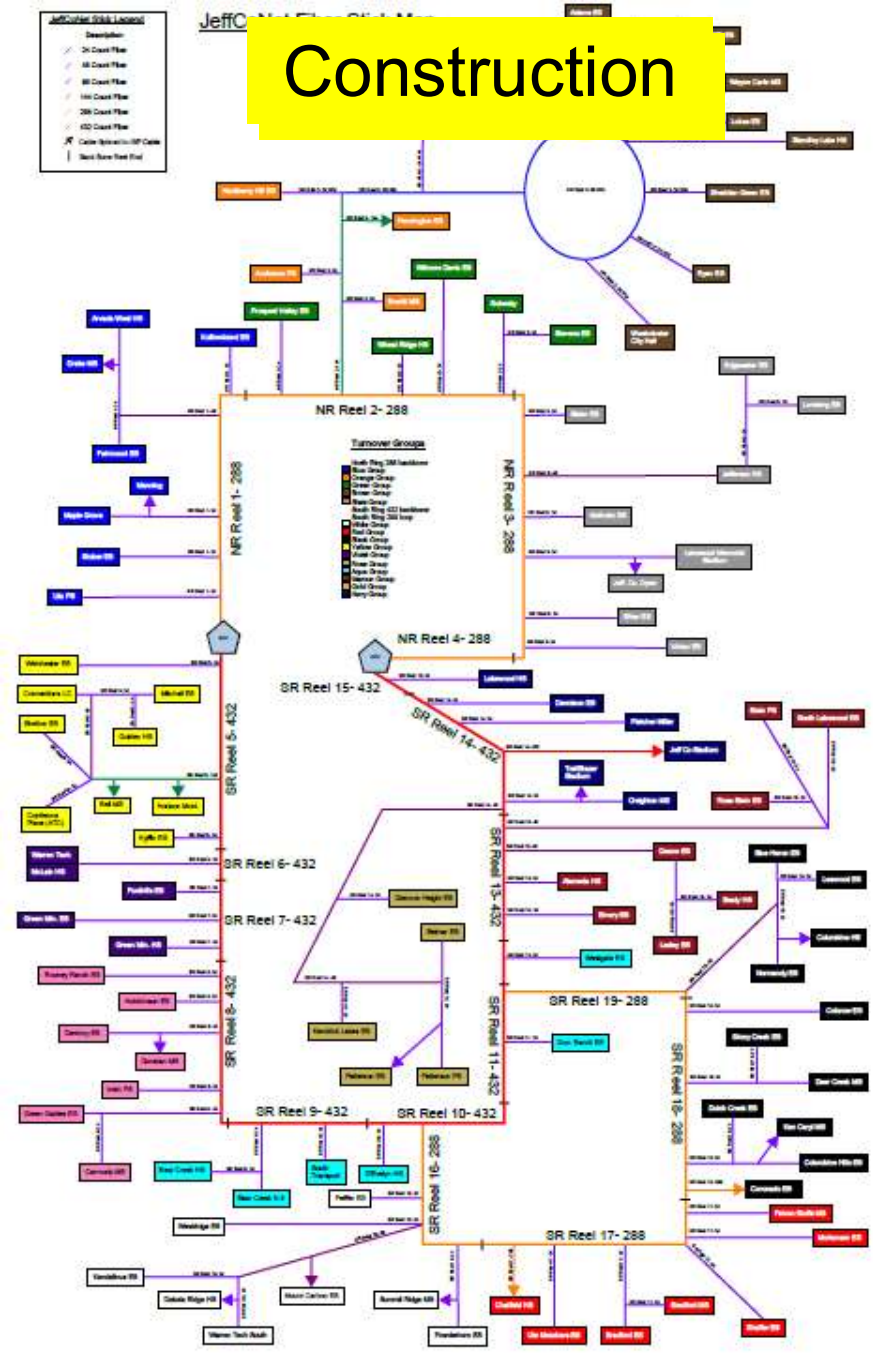
Miles Conduit installed
113 (99%)

Miles Fiber installed
150 (87%)

66 of 96 sites have been
Turned over to Jeffco

Final south schools
turned over end of
June 2023

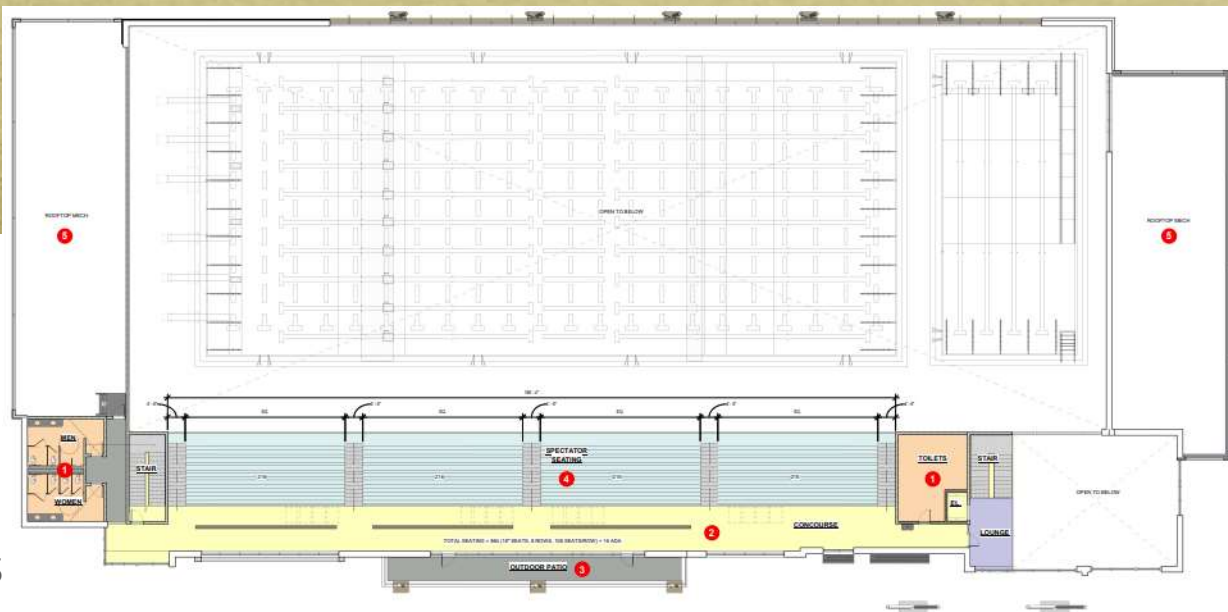
Construction



Meyers Pool

City of Arvada / Jeffco / Apex
OLC Designs – Saunders CMGC

Construction
GMP
\$38,219,600



3



Meyers Pool

City of Arvada / Jeffco / Apex

OLC Designs – Saunders CMGC

Construction

Project Timeline

Phase 1: May - July 2023

- Construction of a semi-temporary parking lot south of the existing facility
- Pool is open
- Existing parking lot in use

Phase 2: July 2023 - June 2024

- Construction of the new facility in the existing parking lot
- Pool remains open
- Existing parking lot is closed, semi-temporary parking lot is in use

Phase 3: June - September 2024

- Construction of the new facility is ongoing
- Pool is closed
- Demolition of the existing facility begins



2023 Policy Projects

Regional Opportunities for Thriving Schools – BOE Nov 10, 2022

Capital Investments for Thriving Schools - BOE Jun 08, 2022

School Closings & Consolidations

Resolution: Board of Education Decision on Staff
Recommendation Regional Opportunities for Thriving Schools
Thursday, November 10, 2022

Construction

GMP

\$6,886,094

Start 11/10/22

Prospect Valley ES (8CR Addition) MOA & Phipps CMGC

Effective July 1, 2023,
Kullerstrand Elementary
School will close and
combine its existing
attendance area with that
of Prospect Valley
Elementary School;

GH Phipps to remain the contractor for the new scope.

37 Week Design & Construction
Schedule



School Closings & Consolidations

Construction

Resolution: Board of Education Decision on Staff
Recommendation Regional Opportunities for Thriving Schools
Thursday, November 10, 2022

Prospect Valley ES (8CR Addition) MOA & Phipps CMGC



School Closings & Consolidations

Construction

Resolution: Board of Education Decision on Staff
Recommendation Regional Opportunities for Thriving Schools
Thursday, November 10, 2022

Prospect Valley ES (8CR Addition) MOA & Phipps CMGC



School Closings & Consolidations

Resolution: Board of Education Decision on Staff
Recommendation Regional Opportunities for Thriving Schools
Thursday, November 10, 2022

Construction

IGMP

\$5,422,602

Start 3/20/23

Stober ES (5CR Addition + Kitchen) LOA & CMGC GTC



Effective July 1, 2023, New Classical Academy at Vivian will close and combine its existing attendance area with that of Stober Elementary School;



Permit



School Closings & Consolidations

Resolution: Board of Education Decision on Staff
Recommendation Regional Opportunities for Thriving Schools
Thursday, November 10, 2022

Construction

Stober ES

(5CR Addition + Kitchen) LOA & CMGC GTC



School Closings & Consolidations

Resolution: Board of Education Decision on Staff
Recommendation Regional Opportunities for Thriving Schools
Thursday, November 10, 2022

Construction

GMP
\$1,713,656

Alameda: Emory → Lasley (Emory
Center Program → Rose Stein)

37 Week Design & Construction
Schedule

Stein ES
(Elevator/Stair Addition)
HCM & CMGC Himmelman



School Closings & Consolidations

Resolution: Board of Education Decision on Staff
Recommendation Regional Opportunities for Thriving Schools
Thursday, November 10, 2022

Construction

GMP
\$2,268,824

Lasley ES

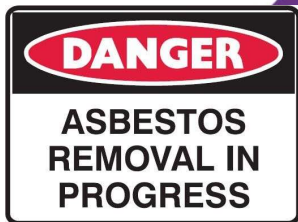
9 Week Construction Schedule

(ADA Lifts / Toilet Rooms, Admin & Parking) H&M & CMGC Bryan

A. Effective July 1, 2023,
Emory Elementary School will
close and combine its existing
attendance area with that of
Lasley Elementary School;



START May 30



School Closings & Consolidations

Resolution: Board of Education Decision on Staff
Recommendation Regional Opportunities for Thriving Schools
Thursday, November 10, 2022

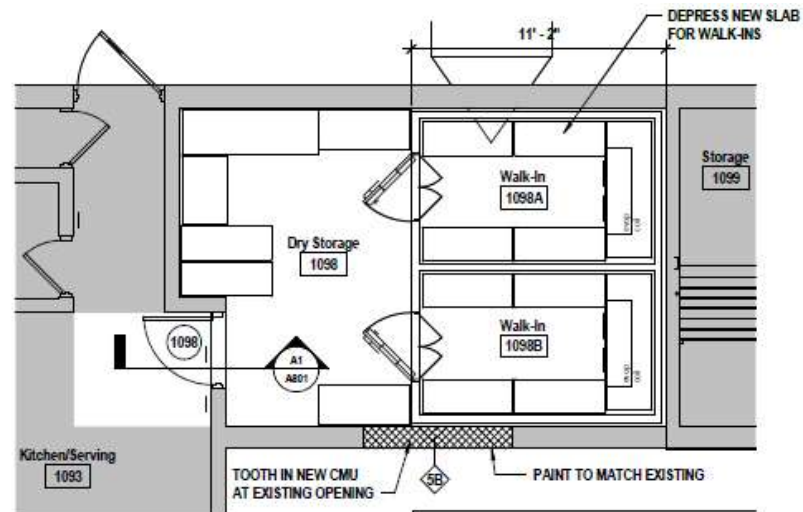
Construction
Kendallvue
Bid
\$187,200

Kitchen Improvements



Kendallvue ES
H&M GC GTC

Bid w/ E&FR



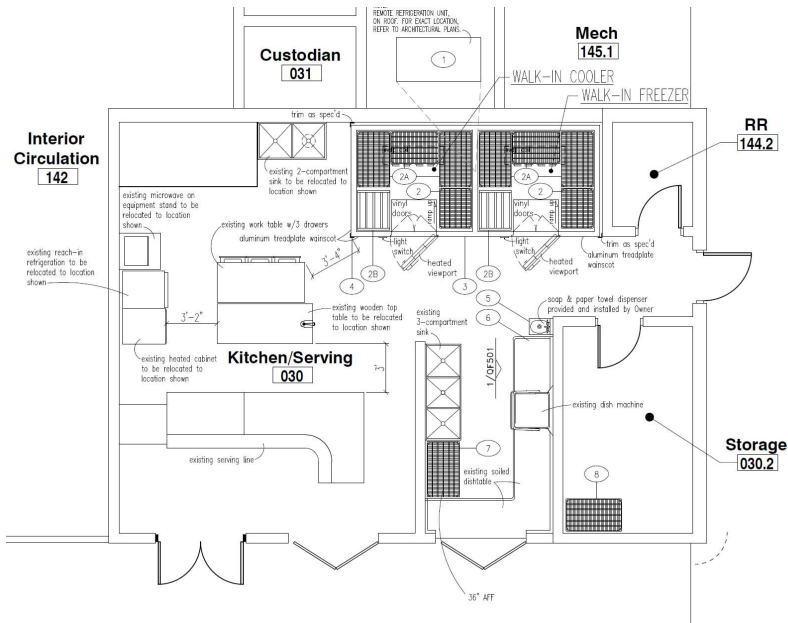
School Closings & Consolidations

Resolution: Board of Education Decision on Staff
 Recommendation Regional Opportunities for Thriving Schools
 Thursday, November 10, 2022

Construction
 Fremont
 GMP
 \$304,571

Kitchen Improvements

Fremont ES Eidos CMGC Mark Young



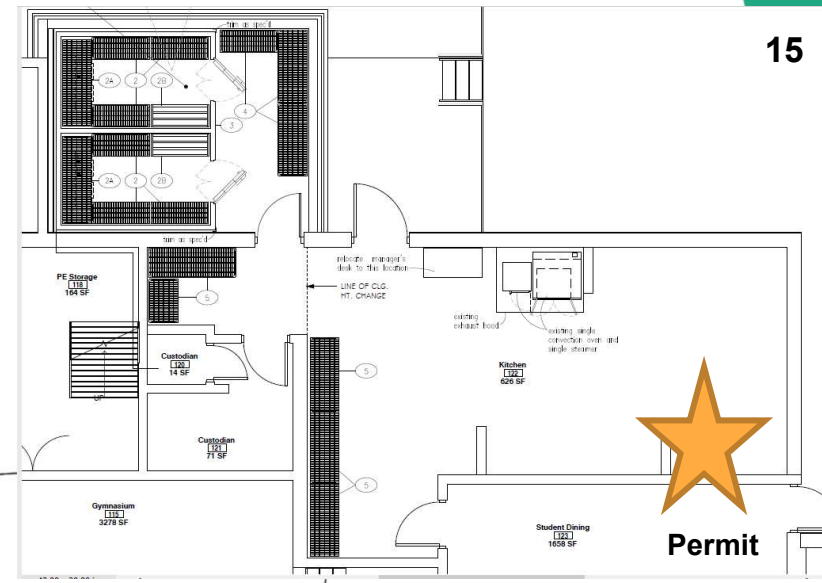
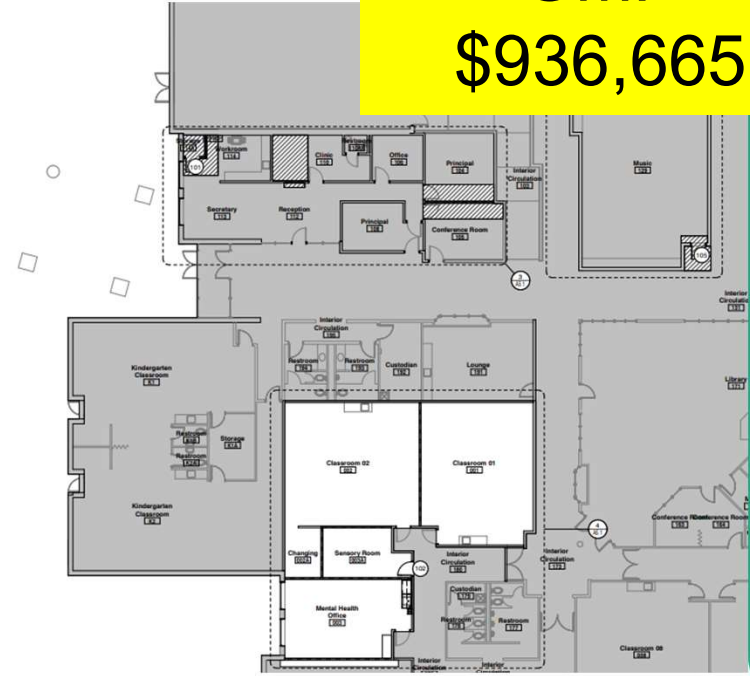
School Closings & Consolidations

Resolution: Board of Education Decision on Staff
Recommendation Regional Opportunities for Thriving Schools
Thursday, November 10, 2022

Construction
Lukas
GMP
\$936,665

Kitchen Addition & Misc Renovations

Lukas ES
Eidos CMGC Mark Young



School Closings & Consolidations

Resolution: Board of Education Decision on Staff Recommendation Regional Opportunities for Thriving Schools
Thursday, November 10, 2022

Construction

GMP 3/15/23
\$2,359,410



Arvada West:
Campbell =
ECE Center
2023-24*

Identify preschool options based on an articulated strategy for district-wide preschool as part of students' PK-12 educational experience;

9 Week Construction Schedule



School Closings & Consolidations

Resolution: Board of Education Decision on Staff
Recommendation Regional Opportunities for Thriving Schools
Thursday, November 10, 2022

Construction

GMP 4/3/23

\$911,936

DW – Receiving Schools Upgrades Bundle #2
A/E MOA – CMGC Saunders

Sierra ES



9 Week Construction Schedule



Identify preschool options based on an articulated strategy for district-wide preschool as part of students' PK-12 educational experience;



Permit

School Closings & Consolidations

Resolution: Board of Education Decision on Staff
Recommendation Regional Opportunities for Thriving Schools
Thursday, November 10, 2022

Construction

GMP 5/3/23

\$2,603,976

9 Week Construction Schedule

DW – Receiving Schools Upgrades Bundle #2 A/E MOA – CMGC Saunders

Weber ES



Identify preschool options based on an articulated strategy for district-wide preschool as part of students' PK-12 educational experience;



School Closings & Consolidations

Resolution: Board of Education Decision on Staff
Recommendation Regional Opportunities for Thriving Schools
Thursday, November 10, 2022

Construction

GMP 3/29/23

\$120,230

DW – Receiving Schools Upgrades Bundle #1 A/E RB+B – CMGC HPM

Meiklejohn

9 Week
Construction Schedule
No Asbestos



Permit Applied 3/28/23
Currently Evaluating

Identify preschool options based on an articulated strategy for district-wide preschool as part of students' PK-12 educational experience;



School Closings & Consolidations

Resolution: Board of Education Decision on Staff
Recommendation Regional Opportunities for Thriving Schools
Thursday, November 10, 2022

Construction

GMP 3/29/23

\$98,478

DW – Receiving Schools Upgrades Bundle #1 A/E RB+B – CMGC HPM

Semper

9 Week
Construction Schedule
No Asbestos



Permit Applied 3/28/23
Currently Evaluating

Identify preschool options based on an articulated strategy for district-wide preschool as part of students' PK-12 educational experience;



School Closings & Consolidations

Resolution: Board of Education Decision on Staff
Recommendation Regional Opportunities for Thriving Schools
Thursday, November 10, 2022

Construction

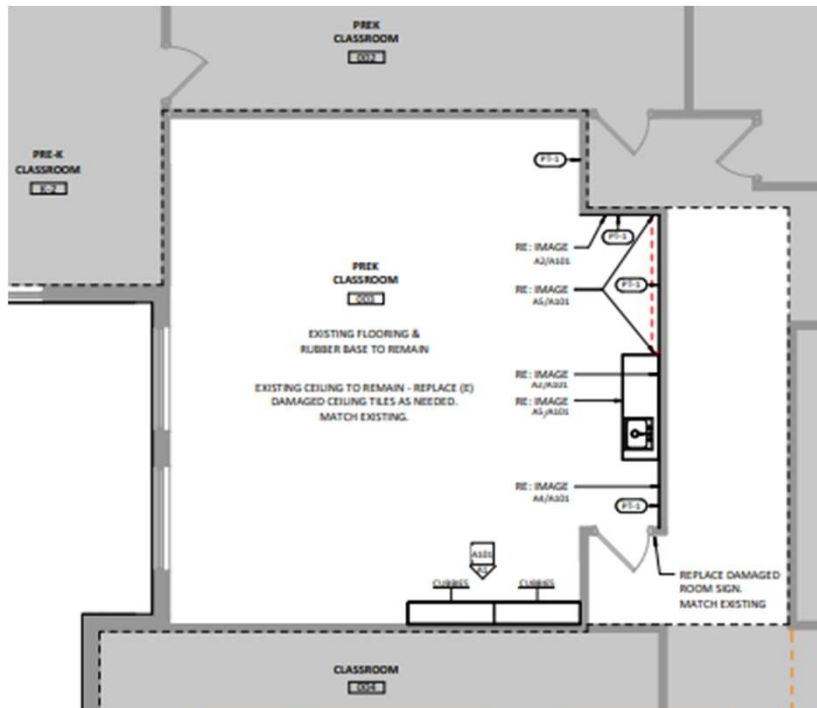
GMP 3/29/23

\$79,794

DW – Receiving Schools Upgrades Bundle #1 A/E RB+B – CMGC HPM

Adams

9 Week
Construction Schedule
No Asbestos



Permit Applied 3/28/23
Currently Evaluating

Identify preschool options based on an articulated strategy for district-wide preschool as part of students' PK-12 educational experience;



School Closings & Consolidations

Resolution: Board of Education Decision on Staff
Recommendation Regional Opportunities for Thriving Schools
Thursday, November 10, 2022

Construction

GMP 3/29/23

\$243,104

DW – Receiving Schools Upgrades Bundle #1 A/E RB+B – CMGC HPM

Hutchinson

9 Week
Construction Schedule
No Asbestos



Permit Applied 3/28/23
Currently Evaluating

Identify preschool options
based on an articulated
strategy for district-wide
preschool as part of
students' PK-12
educational experience;



School Closings & Consolidations

Resolution: Board of Education Decision on Staff
Recommendation Regional Opportunities for Thriving Schools
Thursday, November 10, 2022

Construction

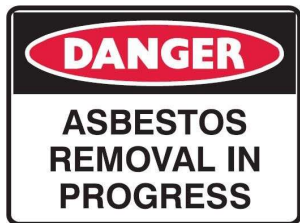
GMP 3/29/23

\$284,510

DW – Receiving Schools Upgrades Bundle #1 A/E RB+B – CMGC HPM

7 Week
Construction Schedule
Due to Asbestos

Vanderhoof



Permit Applied 3/28/23
Currently Evaluating

Identify preschool options based on an articulated strategy for district-wide preschool as part of students' PK-12 educational experience;



School Closings & Consolidations

Resolution: Board of Education Decision on Staff
Recommendation Regional Opportunities for Thriving Schools
Thursday, November 10, 2022

Construction

GMP 3/29/23

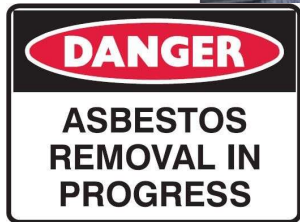
\$282,698

DW – Receiving Schools Upgrades Bundle #1
A/E RB+B – CMGC HPM

7 Week
Construction Schedule
Due to Asbestos



Maple Grove



Permit Applied 3/28/23
Currently Evaluating

Identify preschool options based on an articulated strategy for district-wide preschool as part of students' PK-12 educational experience;



School Closings & Consolidations

Resolution: Board of Education Decision on Staff
Recommendation Regional Opportunities for Thriving Schools
Thursday, November 10, 2022

Construction

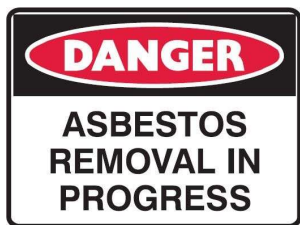
GMP 3/29/23

\$373,999

DW – Receiving Schools Upgrades Bundle #1 A/E RB+B – CMGC HPM

7 Week
Construction Schedule
Due to Asbestos

Green Gables



Permit Applied 3/28/23
Currently Evaluating

Identify preschool options based on an articulated strategy for district-wide preschool as part of students' PK-12 educational experience;

School Closings & Consolidations

Resolution: Board of Education Decision on Staff
Recommendation Regional Opportunities for Thriving Schools
Thursday, November 10, 2022

Construction

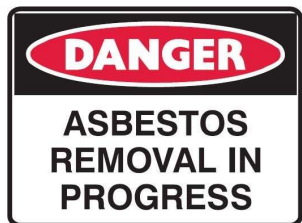
GMP 3/29/23

\$391,757

DW – Receiving Schools Upgrades Bundle #1 A/E RB+B – CMGC HPM

7 Week
Construction Schedule
Due to Asbestos

Fremont



Permit Applied 3/28/23
Currently Evaluating

Identify preschool options based on an articulated strategy for district-wide preschool as part of students' PK-12 educational experience;



School Closings & Consolidations

Resolution: Board of Education Decision on Staff
Recommendation Regional Opportunities for Thriving Schools
Thursday, November 10, 2022

Construction

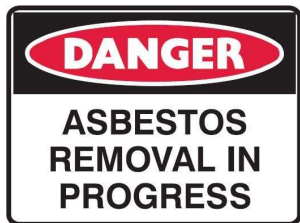
GMP 3/29/23

\$407,963

DW – Receiving Schools Upgrades Bundle #1 A/E RB+B – CMGC HPM

7 Week
Construction Schedule
Due to Asbestos

Secret



Permit Applied 3/28/23
Currently Evaluating

Identify preschool options
based on an articulated
strategy for district-wide
preschool as part of
students' PK-12
educational experience;



School Closings & Consolidations

Resolution: Board of Education Decision on Staff
Recommendation Regional Opportunities for Thriving Schools
Thursday, November 10, 2022

Construction

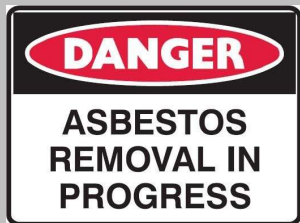
GMP 3/29/23

\$406,332

DW – Receiving Schools Upgrades Bundle #1 A/E RB+B – CMGC HPM

7 Week
Construction Schedule
Due to Asbestos

Foothills



Permit Applied 3/28/23
Currently Evaluating

Identify preschool options based on an articulated strategy for district-wide preschool as part of students' PK-12 educational experience;

School Closings & Consolidations

Resolution: Board of Education Decision on Staff
Recommendation Regional Opportunities for Thriving Schools
Thursday, November 10, 2022

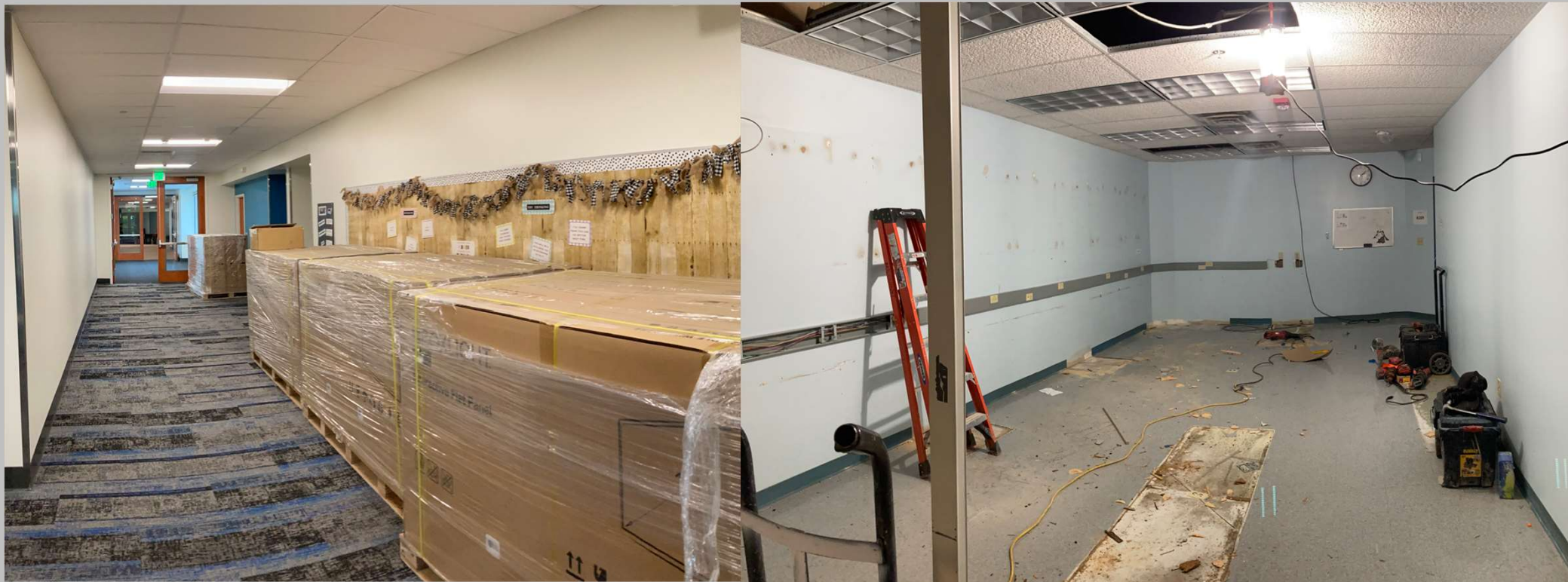
Construction

GMP 3/29/23

\$527,877

DW – Receiving Schools Upgrades Bundle #1
A/E RB+B – CMGC HPM
Powderhorn

9 Week
Construction Schedule
No Asbestos



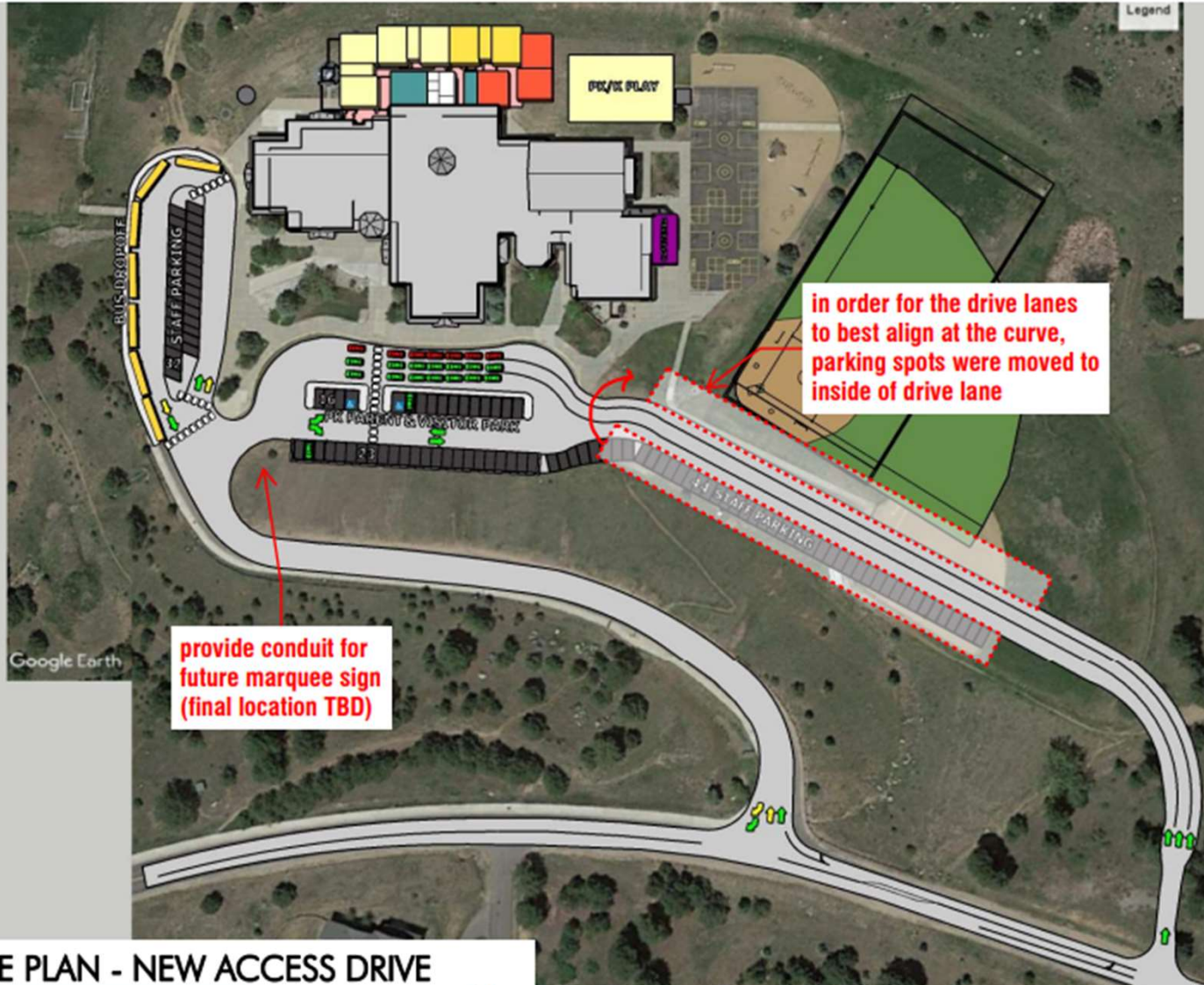
School Closings & Consolidations

Resolution: Board of Education Decision on Staff
Recommendation Regional Opportunities for Thriving Schools
Thursday, November 10, 2022

Bergen Valley ES - EUA & GC TBD

DD

Effective July 1, 2024,
Bergen Meadow K-2 will
close and the grade
configuration of Bergen
Valley will be converted to a
PK-5.



OVERALL SITE PLAN - NEW ACCESS DRIVE

School Closings & Consolidations

Resolution: Board of Education Decision on Staff
Recommendation Regional Opportunities for Thriving Schools
Thursday, November 10, 2022

DD

Effective July 1, 2024,
Bergen Meadow K-2 will
close and the grade
configuration of Bergen
Valley will be converted to a
PK-5.

Bergen Valley ES - EUA & GC TBD



ENLARGED 1ST FLOOR CLASSROOM ADDITION

School Closings & Consolidations

Resolution: Board of Education Decision on Staff
Recommendation Regional Opportunities for Thriving Schools
Thursday, November 10, 2022

Bergen Valley ES - EUA & GC TBD

PRELIMINARY SCHEDULE

- DAG Meeting week of 5/22
- 50% DD submittal: 6/8
- CD submittal: 7/13
- Bid Docs out: 7/27
- Bid Date: 8/24
- BOE Approval: September meeting
- Construction start – late September/early October
- Addition open: Winter Break '24-25

Effective July 1, 2024,
Bergen Meadow K-2 will
close and the grade
configuration of Bergen
Valley will be converted to a
PK-5.

Program Verification & Feasibility Study – DLR Group

Refined
Concept Study

Fletcher Miller Special School

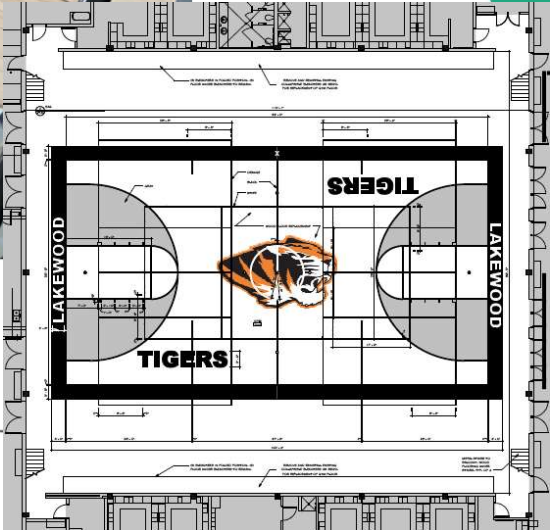
BOE Jun 08, 2022 - Special Meeting-Study/Dialogue Session
Capital Investments for Thriving Schools



2023 None Bond Projects

Lakewood HS – Gym Floor Replacement (Flood Damage – Insurance) Eidos – Sport Tech Flooring

Construction
\$261,385.00



DW Mechanical 2023 South Lakewood (1 RTU)

Construction
\$1,082,796.00

Columbine – CMGC Himmelman



Turf Field Replacement & Enlargement Wheat Ridge HS Eidos – GTC

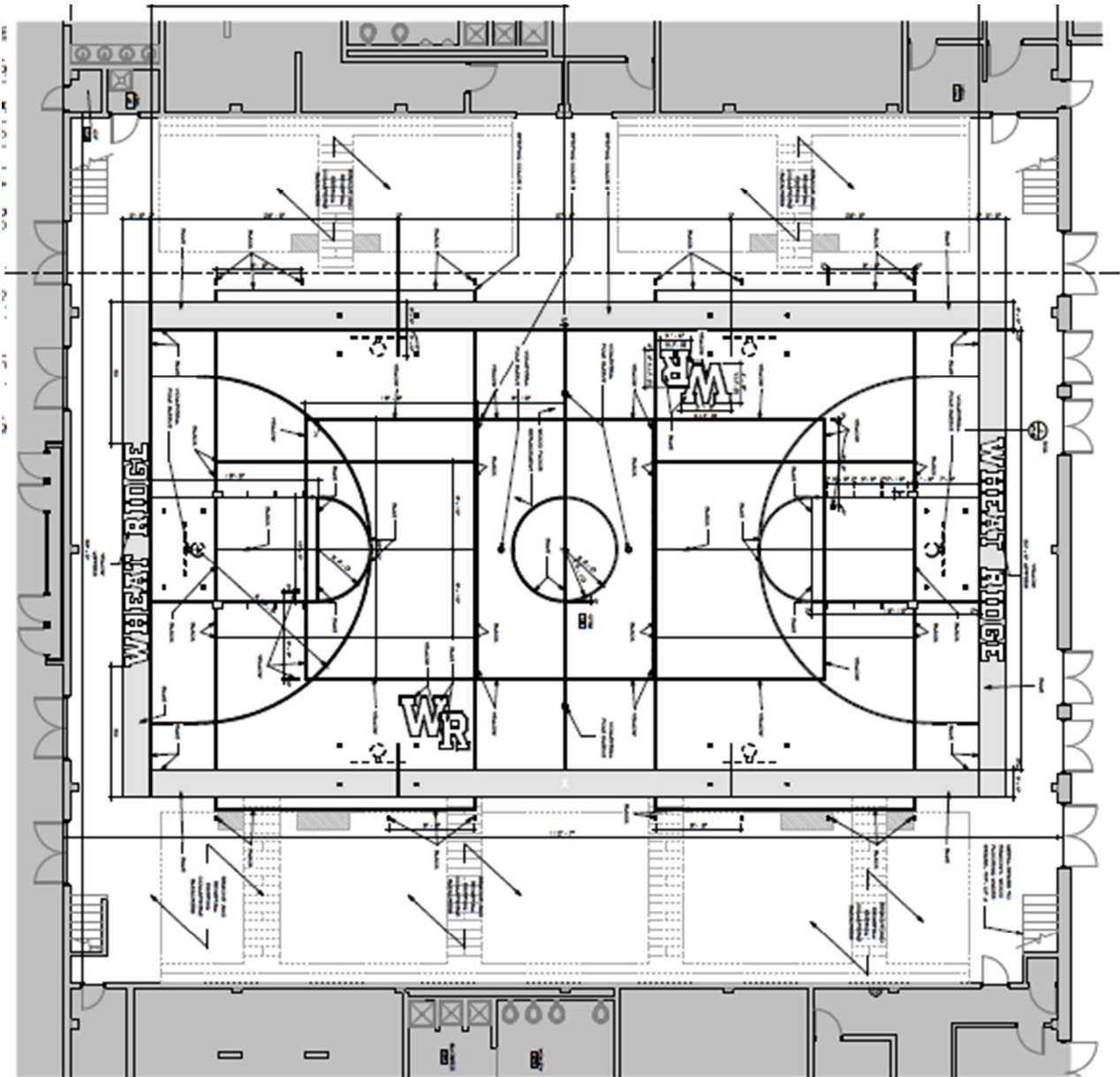
Construction
\$688,170.00



Wheat Ridge HS – Gym Floor Replacement

Construction
\$262,784.00

Eidos – Sport Tech Flooring



DW Exterior Lighting 2023

Construction
\$125,203

Ackerman – Northwest Electric

- Replace Direct Burial electrical lines at the 6th & Kipling Stadium Lighting



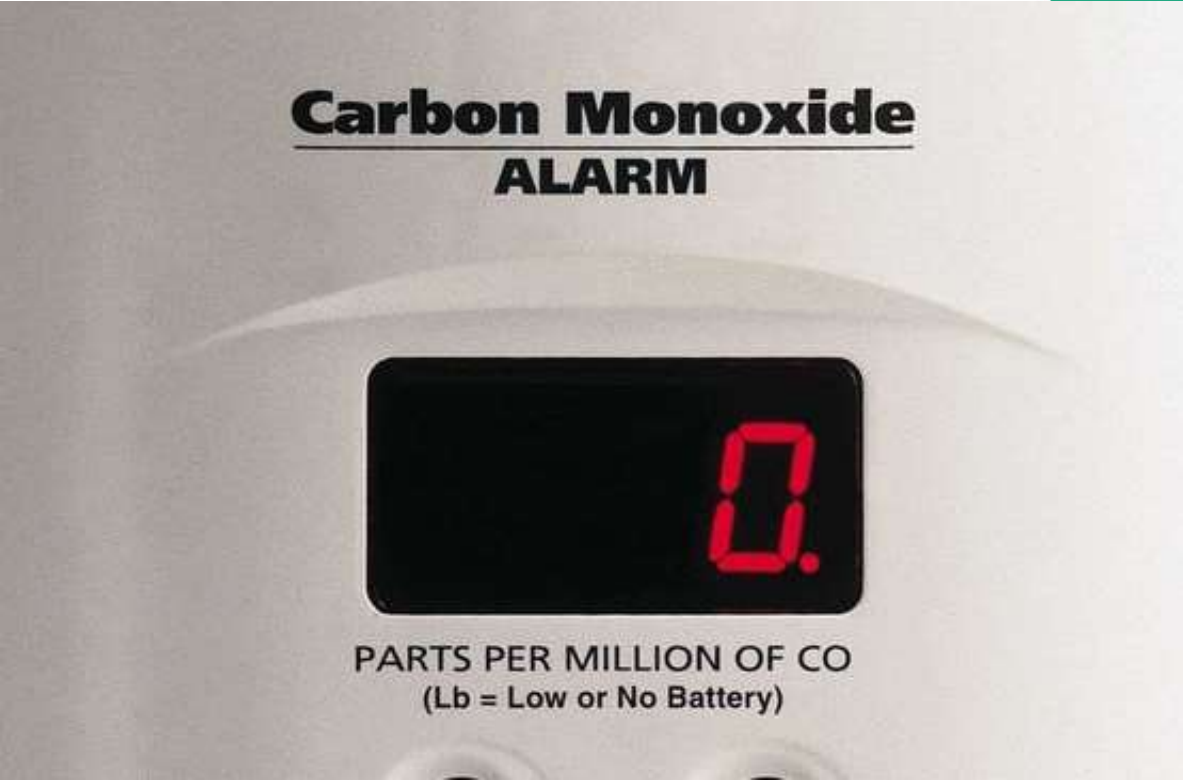
DW Carbon Monoxide Notification

Construction
\$317,056

7 Schools – Required by South Metro Fire District

Coronado, Blue Heron, Leawood, Normandy,
Dutch Creek, Stony Creek, Columbine Hills

TLH Fire – Tower Electric



DW FA Upgrades (Voice Evac) D'Evelyn & Pomona TLH Fire – Weifield Group

Construction
\$1,178,353.00

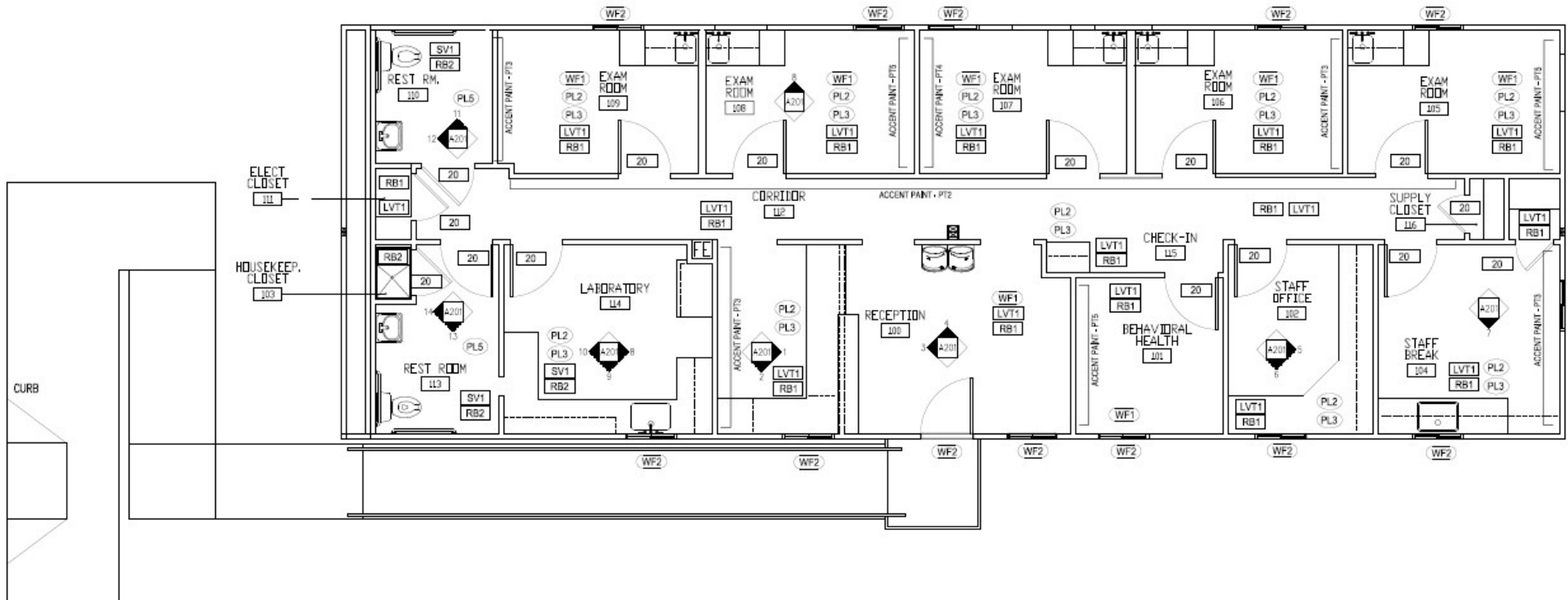


Stride Clinic @ Alameda International Jr/Sr High

Jordin – Haselden

Construction
\$446,000

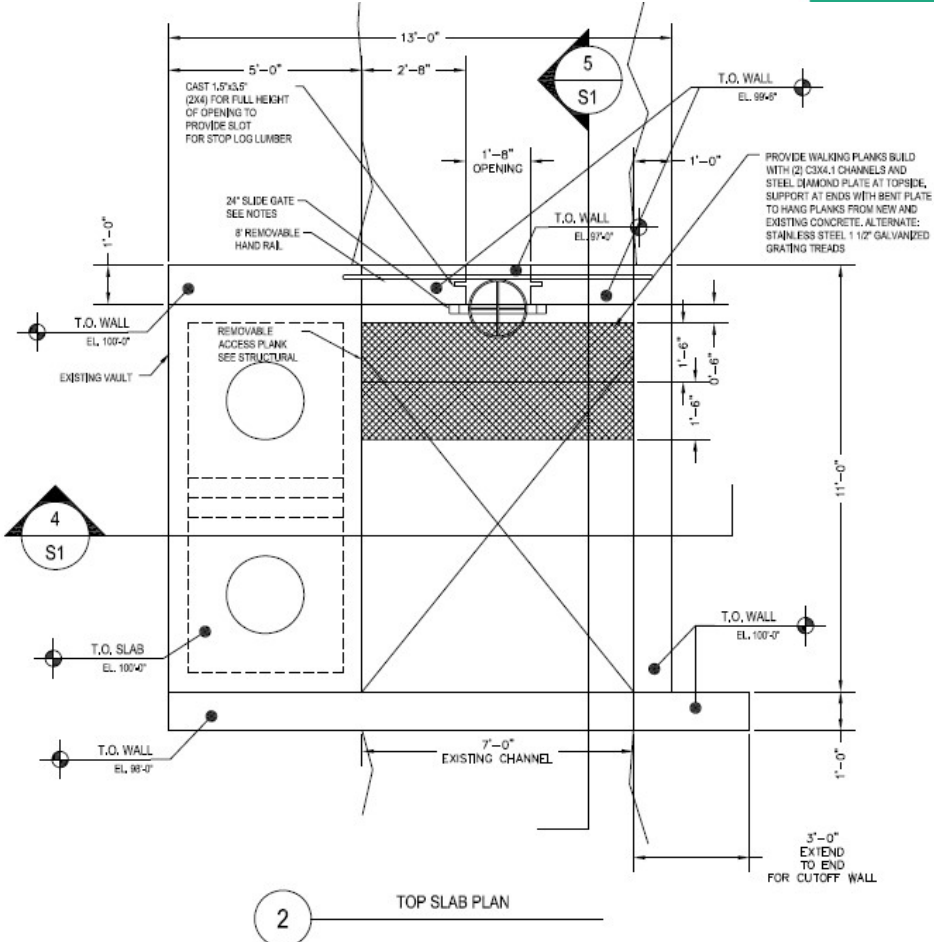
Modular
\$283,273



Shadow Mountain Diversion Repair Failing Structure (water compliance) IMEG – GC Bear Excavating

**Construction
Bid 6/14/23
\$169,749**

**Budget \$130,000
(\$39,749) over budget**

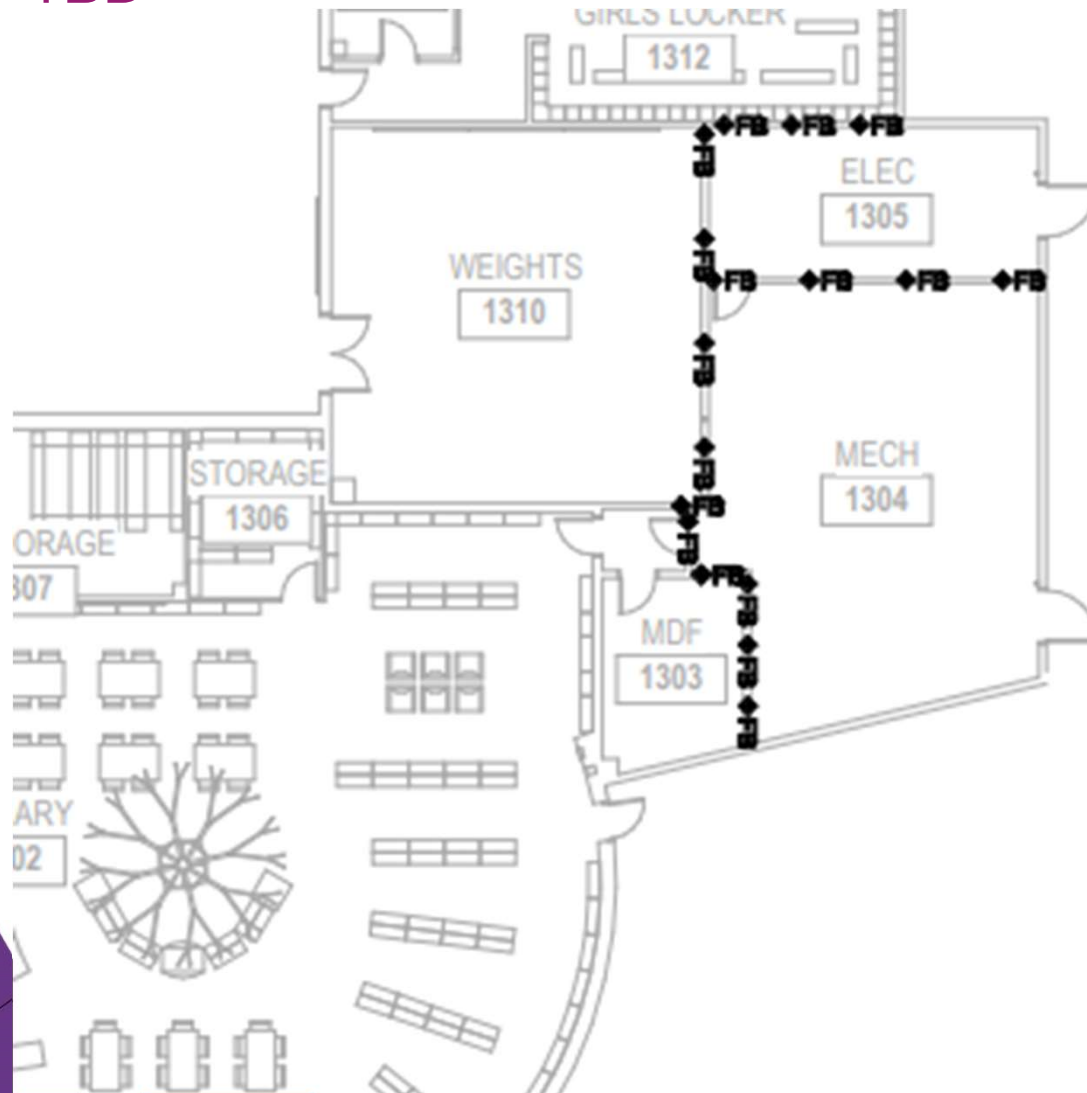


Bear Creek K8 Condensing Boiler

Columbine – TBD

Consultant Selection

Estimate \$80,000

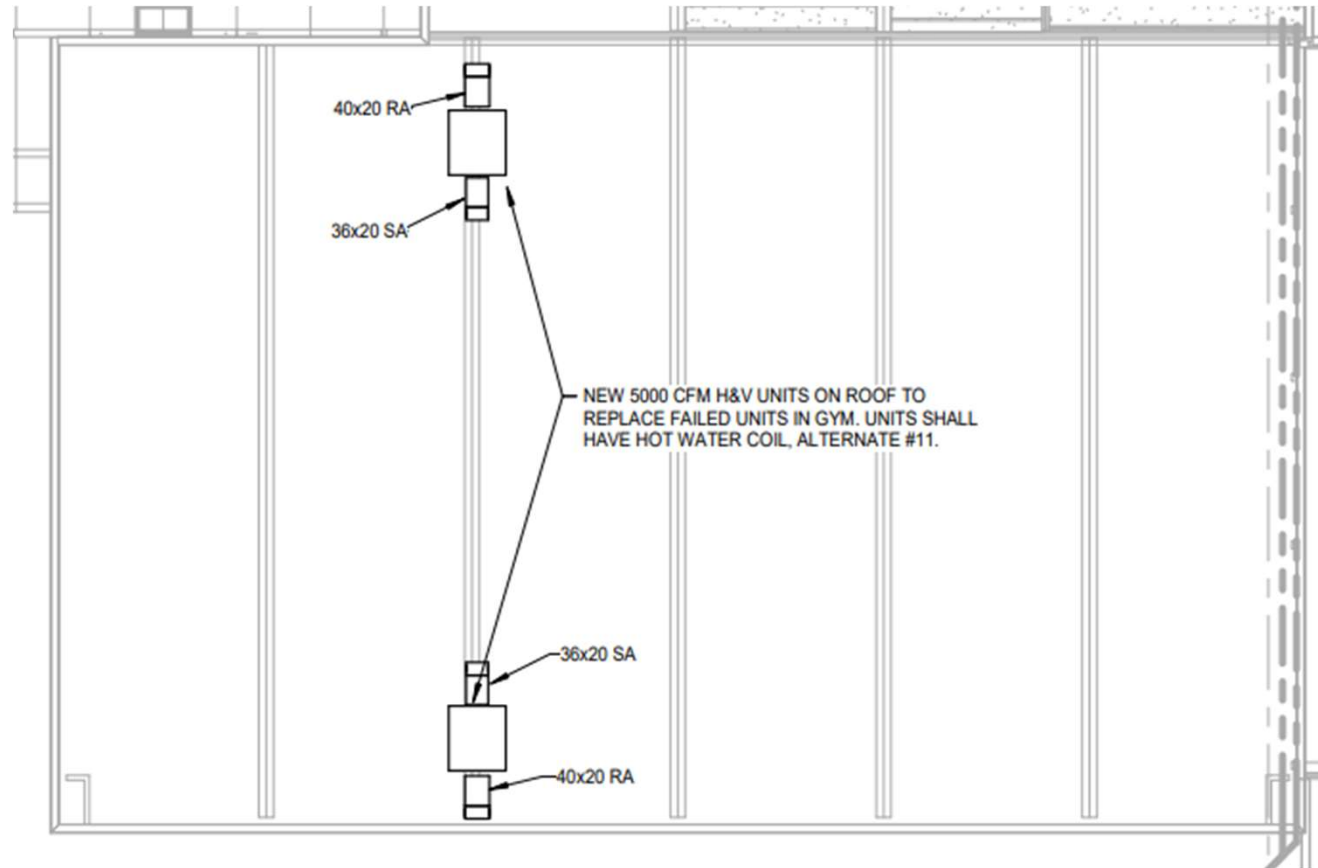


Alameda HS AHU

TBD – TBD

Consultant Selection

\$200,000 Estimate



2024 Bond Projects

Location	Description	Bond Scope	
Leyden Rock	New School Golden	\$ 21,336,000.00	
West Lakewood	New School Morrison	\$ 22,402,800.00	
Bradford North	Efficiency & Future Ready (Flooring , Paving, LED Complete)	\$ 64,259.00	SD
Bradford South	Efficiency & Future Ready (Flooring, HVAC, LED Complete)	\$ 94,041.00	SD
Fairmount	Efficiency & Future Ready (Roofing, Flooring, Playground Complete) (HVAC Design Complete)	\$ 452,076.00	SD
Free Horizon	Efficiency & Future Ready (Secure Entry Remains)	\$ 175,000.00	SD
Leawood	Efficiency & Future Ready (Led Complete)	\$ 534,630.00	SD
McLain High School	Efficiency & Future Ready	\$ 605,816.00	SD
Meiklejohn	Efficiency & Future Ready (LED Complete)	\$ 200,705.00	DD
Normandy	Efficiency & Future Ready (Playground LED Complete)	\$ 536,090.00	SD
Rooney Ranch	Efficiency & Future Ready (Flooring, LED Complete)	\$ 141,623.00	SD
West Woods	Efficiency & Future Ready (flooring LED Complete) HVAC design 99% complete)	\$ 1,777,354.00	DD
Coal Creek K8	Efficiency & Future Ready	\$ 788,966.00	Re-Bid Fall
Drake Middle	Efficiency & Future Ready	\$ 658,174.00	Re-Bid Fall
Moore MS	Late Summer Bid Efficiency & Future Ready	\$ 925,804.00	Re-Bid Fall
Warren Tech Central	Efficiency & Future Ready -	\$ 2,492,054.00	Re-Bid Fall

Plus FF&E Projects



Next Meeting 8/17/23

80

